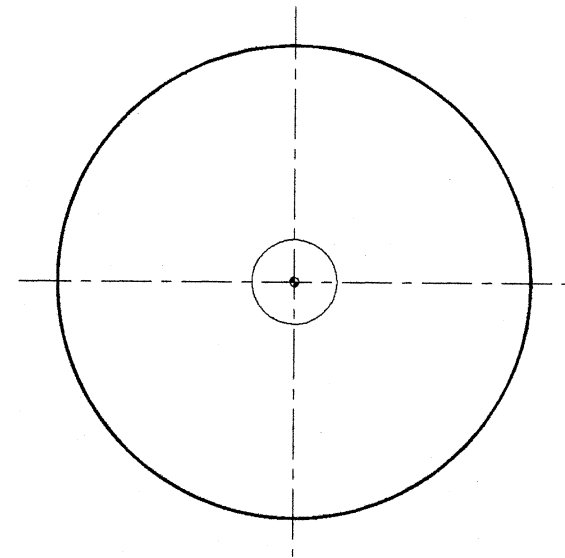
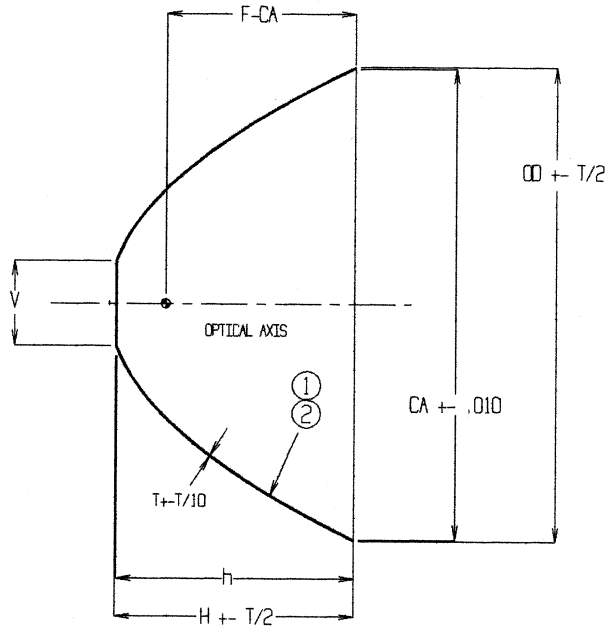


ALL CONCEPTS CONTAINED WITHIN THIS DRAWING ARE PROPRIETARY TO PHOENIX ELECTROFORMED PRODUCTS, INC.
AND MAY NOT BE CONVEYED TO THIRD PARTIES WITHOUT WRITTEN CONSENT

REVISIONS			
ZONE	REV	DESCRIPTION	DATE



.13	3.000	12.875	12.963	6.577	6.532	.040	5.407
.12	2.750	12.875	12.963	6.636	6.592	.040	5.407
.11	2.500	12.875	12.963	6.690	6.646	.040	5.407
.10	2.250	12.875	12.963	6.821	6.779	.040	5.407
.9	1.750	12.875	12.963	6.924	6.883	.040	5.407
.8	2.750	10.500	10.592	4.323	4.279	.040	3.094
.7	2.250	10.500	10.592	4.426	4.383	.040	3.094
.6	1.750	10.500	10.592	4.508	4.466	.040	3.094
.5	.750	10.500	10.592	4.611	4.594	.040	3.094
.4	2.750	9.500	9.595	3.489	3.445	.040	2.260
.3	2.250	9.500	9.595	3.592	3.549	.040	2.260
.2	1.750	9.500	9.595	3.674	3.633	.040	2.260
.1	.750	9.500	9.595	3.777	3.737	.040	2.260
#	V	CA	OD	H	h	T	CA-F

- ① SURFACE FINISH 80-50 SCRATCH-DIG PER MIL-D-13830A
 ② AVAILABLE REFLECTIVE ENHANCEMENT COATINGS:
 AU1 VACUUM DEPOSITED GOLD
 AU2 ELECTRO-DEPOSITED GOLD
 AG VACUUM DEPOSITED SILVER
 AF VACUUM DEPOSITED ALUMINUM / MAGNESIUM FLUORIDE (MgF₂) OVERCOAT
 AO VACUUM DEPOSITED ALUMINUM / QUARTZ (SiO₂) OVERCOAT
 DCC DICHOIC GOLD COATING
 RH ELECTRO-DEPOSITED BRIGHT RHODIUM

PARABOLIC EQUATION
 $Y^2=4FX$ F=1.500

<small>UNLESS OTHERWISE SPECIFIED DIMENSIONS ARE IN INCHES TOLERANCES ARE:</small> FINISHES: 63 ✓ <small>DECIMALS .0000" ± .0005" ANGLES .125" ± .015" .125" ± .015"</small> UNLESS OTHERWISE SPECIFIED DO NOT SCALE DRAWING	MISCAL LSSN	PHOENIX ELECTROFORMED PRODUCTS, INC.	
	CONTRACT NO. APPROVALS: _____ DATE: _____ DRAWN: LB DATE: 5-7-09 CHECKED: _____ ENGR: _____ DESIGN ACTIVITY: _____	TITLE PARABOLIC REFLECTOR PAS	SIZE: _____ SCALE: _____